



Holmes Chapel Partnership Community Newsletter Issue 128 MARCH 2025

WELCOME TO THE MARCH 2025 NEWSLETTER

As we come out of winter hibernation and the days get longer it's time to look ahead. Clocks don't go forward until March 30th and Easter is late this year, but there is plenty going on in the community to keep you entertained and involved!

If you head down to the station today you can see the new art work that has been installed - this is just a sample! See the sights of Holmes Chapel in vivid colour - more information inside



**HOLMES CHAPEL
FUN RUN**
REGISTRATION IS NOW OPEN!
VISIT:
www.hcpartnership.org.uk/HCFunrun
Date: Sunday 11th May 2025
Location: Dane Meadow
Time: 9.30am
Entry: £2

As mentioned in last month's issue, we are organising a **Fun Run** aimed at **4-16** year olds in the Dane Meadow in May. See inside and on the Partnership website for full details.

Last month we focused on Olympians Tom and Emily Ford and this month we are focusing on the gold phone box to draw your attention to the **Defibrillator**.

Inside are full details about its use and the location of other defibrillators in Holmes Chapel.

Holmes Chapel Parish Council is holding its **Annual Parish Meeting on Thursday 20th March at 7pm** This is a great opportunity to catch up with what's going on in your community and to ask your own questions of the Parish Councillors



Best Wishes from your Partnership Team
For more information visit www.hcpartnership.org.uk

Chairman's News March 2025



Last month I talked about the various activities that the Holmes Partnership is involved in throughout the year and referred to the fact that we're always looking for volunteers to help us run events. A new event for this year, where we are looking for volunteer stewards, is the **Holmes Chapel Fun Run** which will be held in **Dane Meadow** on the morning of 11th May this year. The route we will create around Dane Meadow is approximately 2Km. We are encouraging all entrants to get sponsorship towards a project they are directly involved in (like the HCCS Kenya trip) or for a local group or charity. There will be an entry fee of £2 and further information can be found on our website at <https://www.hcpartnership.org.uk/hcfunrun>.

If you have never visited Dane Meadow, or simply are not sure where it is, have a look at the map below. You can see that the Meadow can be approached by roads off Bramhall Drive, but we would of course always encourage you to leave the car at home and walk to get there. Additionally, footpath access can also be gained from Knutsford Road on the other side of the road to The Old Vicarage.



For those of you who may be having **Harry Styles fans** visiting during the Easter Holidays, I am pleased to report that we will be starting our Harry's Home Village Tours again in April, with **our first guided tour on the 12th April 2025 and a second on the 19th April 2025**. We will then plan to offer guided tours each week on Fridays and Saturdays, starting on the 2nd May 2025. Those wishing to book places will need to move quickly as they will go quickly. Further information can be found here: <https://www.hcpartnership.org.uk/guided-tours>.

And finally, The Holmes Chapel Partnership has been invited by the Victoria Club this year to assist them in the organisation and booking of the stalls at the **Village Summer Fair** which this year is on the 6th July 2025. Further information can be found here: <https://www.hcpartnership.org.uk/village-fair>.

Peter Whiers
Chairman
Holmes Chapel Partnership

HOLMES CHAPEL FUN RUN

REGISTRATION IS NOW OPEN!

VISIT:

www.hcpartnership.org.uk/HCFunrun

Date: Sunday 11th May 2025

Location: Dane Meadow

Time: 9.30am

Entry: £2

Are you aged 4-16? Are you fundraising for any charities or local groups, or do you just like running and getting medals? Then take part in Holmes Chapel's very first Fun Run this May!

The route round the Dane Meadow is approximately 2km, with disabled access and accessible routes available.



To take part please fill in the registration form at the link above. To volunteer as a steward email: info@hcpartnership.org.uk



Holmes Chapel Village Fair

It may feel premature to be talking about a Summer Fair already when it's still cold outside and the daffodils haven't even burst into bloom, but we've already started taking bookings for stalls at this event! As a well established community event, stall costs are kept low to encourage local businesses, charities and groups to take part and showcase their offerings. All you need to bring is your own gazebo and table.

There are currently still pitches available but these will fill up soon. If you're keen to get involved please email hcvillagefair@hotmail.com and ask for a booking form which you will need to complete and return. Your stall will not be on the list until a booking form is received!



SAVE THE DATE!

Holmes Chapel Village Fair

Sunday 6th July 2025, 12-4pm

Holmes Chapel's Annual
Community Summer Event
Craft & Gift Stalls, Rides, Dog Show, BBQ
Classic Cars, Licensed Bar, Dane Sound Radio

Hosted & Organised by The Victoria Club

STALLHOLDERS

This year the stalls are being organised by
Holmes Chapel Partnership

Stall fees continue to be low at only **£20**
(£15 for non-profits)

Email hcvillagefair@hotmail.com
to book your pitch

Holmes Chapel Defibrillators



In January, the Holmes Chapel Parish Council painted the old phone box near Mandeville's Bakery gold to celebrate our very own medal winning Olympic athletes, Tom and Emily Ford.

If you've seen the gold phone box when you've been out in the village, or the photographs from the opening event you'll have noticed it is no longer a public telephone box, but the location of one of the eleven defibrillators available in Holmes Chapel.

What is a defibrillator?

A defibrillator is a device that gives a jolt of energy to the heart. It helps get the heart beating again when someone is in cardiac arrest and their heart has stopped.

You might also hear it being called a defib, a PAD (public access defibrillator) or an AED (automated external defibrillator).

How to use a defibrillator

If someone is in cardiac arrest, call 999 and start CPR. If you're on your own, do not interrupt CPR to go and find a defibrillator. If it's possible, send someone else to find one. When you call 999, the operator can tell you if there's a public access defibrillator nearby.

Anyone can use a defibrillator. You do not need training. Once you turn it on, it will give clear step-by-step voice instructions.

Many defibrillators also have visual prompts and images showing how to use it.

The device checks the person's heart rhythm and will only tell you to give them a shock if it's needed. You cannot shock yourself or someone else accidentally.

Steps to using a defibrillator

Step 1: Press the green button to switch on the defibrillator and follow the instructions.

Step 2: Remove the person's clothing above the waist.

You might have to remove a person's bra by slipping the straps down or cutting it off. Most defibrillator packs have tools like scissors to help you to do this. It might feel odd or embarrassing but do not let that stop you. Remember, this is a life-or-death situation.

Step 3: Peel off the sticky pads and attach them to the person's bare skin. Put one pad on each side of the chest as shown in the picture on the defibrillator.

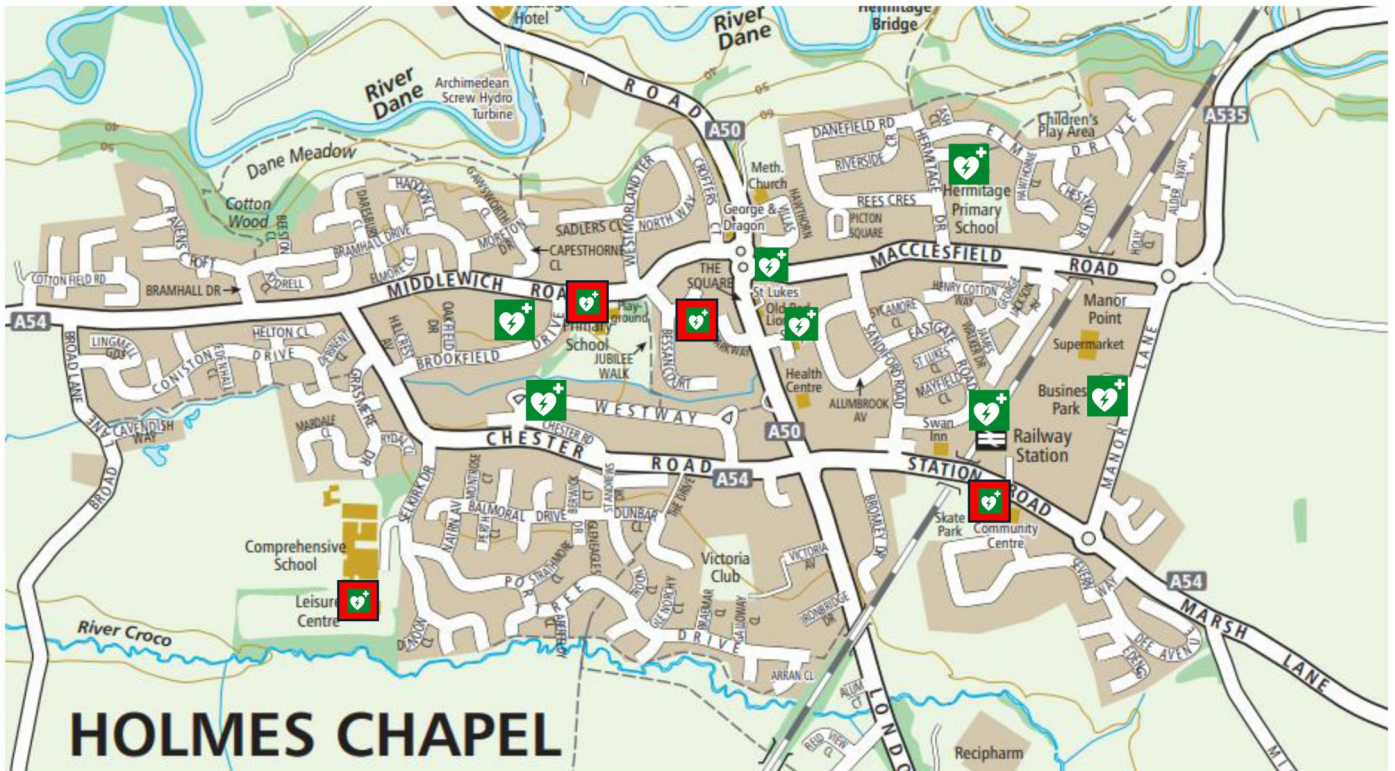
Step 4: Once you have attached the pads, stop CPR and do not touch the person. The defibrillator will then check the person's heart rhythm.

Step 5: The defibrillator will decide whether a shock is needed. If so, it will tell you to press the 'shock' button. An automatic defibrillator will shock the person without you needing to do anything. Do not touch the person while they're being shocked.

Step 6: The defibrillator will tell you when the shock has been given and whether you need to continue CPR.

Step 7: If the defibrillator tells you to continue to do CPR, continue with chest compressions until the person shows signs of life, or the defibrillator tells you to stop so it can analyse the heartbeat again.

The information on how to use a defibrillator was taken from the British Heart Foundation website where you can also find a video showing you how to use one: <https://www.bhf.org.uk/how-you-can-help/how-to-save-a-life/defibrillators/understanding-defibrillators-what-they-are-and-how-to-use-them>



24/7 Public Access Defibrillators:

- Chester Road / Westway in Phone Box.
- Brookfield Drive – Cedars Care Home – 24 hr access but need to ring the bell for access into the home
- Macclesfield Road at The Square in Phone Box.
- London Road at Fire Station
- Station Road - Railway Station.
- Hermitage Primary School – On the school gate.
- Morrey’s Hardware Store – Holmes Chapel Business Park



Restricted Access Defibrillators

- Station Road - Holmes Chapel Community Centre
Access from 6am – 10pm Mon – Fri; 8am – 5pm Sat, Sun
- Leisure Centre, Selkirk Drive, at Holmes Chapel Comprehensive school
Access from 5pm – 10pm Mon – Fri; 9am – 5pm Sat, Sun
- Tesco Express, London Road . Access from 7am – 11pm
- Holmes Chapel Primary School – inside school library. Access from 8:30am – 4:30pm Mon – Fri, TERM TIME ONLY

Parish Council News



Youth Council feature on Dane Sound Radio!

We are delighted that our Youth Councillors will be having a regular slot on Dane Sound Radio. Writing the show themselves, this is a great opportunity for our young Councillors. To access Dane Radio, just ask your smart speaker to enable or play Dane Sound Community Radio or go online to danesound.com and click on the button that says "listen live." To listen to their first show please go to <https://www.mixcloud.com/danesound/ds-studio-holmes-chapel-youth-council-240125/>

Battery Safety Campaign

The Parish Council is supporting Electrical Safety First in their campaign to address the alarming rise in deaths and injuries resulting from fires and explosions caused by substandard e-scooter and e-bike batteries.

This campaign has the support of over 500 local councils and nearly 100 organisations, including prominent voices such as the National Fire Chiefs Council, Which? and Zurich. They need your support for our campaign to put an end to the sale of unsafe lithium-ion batteries.

The campaign asks for:

Safety Assurance - A third-party safety assessment, conducted by a government-approved body, for all e-bikes, e-scooters, and their lithium-ion batteries before they enter the UK market. This process mirrors safety measures in place for other high-risk products like fireworks and heavy machinery.

Responsible Disposal - The Government is to make regulations ensuring the safe disposal of lithium batteries once their lifecycle ends.

Comprehensive Fire Safety - The Government is to assign responsibility to comprehensively addressing fire-related concerns. This involves enhancing safe usage, charging, and storage practices for these devices. It includes setting standards for conversion kits and charging systems and considering a temporary ban on the sale of universal chargers that heighten fire risks.

Online Marketplaces - A clear and enforceable duty on online marketplaces, and clearer definition of key terms to provide confidence for consumers, businesses, and the online marketplaces themselves together with the extension of liability for defective products to online marketplaces, particularly those sold by third party sellers. This will ensure all existing and future online marketplaces and products cannot take advantage of gaps to avoid responsibility.

For more information go to their website:
<https://www.electricalsafetyfirst.org.uk/battery-breakdown/battery-safety-campaign/>



HOLMES CHAPEL ANNUAL PARISH MEETING

Brooklands Room,
Holmes Chapel Community Centre

Thursday 20th March 2025 at 7.00 p.m.

**Come and hear an update on what matters to
Our Community and meet your Parish Councillors**

All are very welcome!

Complimentary refreshments



What's in a SID?

The SID on Macclesfield Road showing the approaching vehicle is travelling at 36mph



There are four Speed Indicating Devices (SIDs) in Holmes Chapel which display vehicle speeds and tell drivers to slow down if they are over the speed limit.

They are funded and managed by the Parish Council.

Many people are not aware that the SIDs also store the speed and time (but not the registration) of every passing vehicle.

The SIDs collect a large amount of information, such as, How many vehicles are speeding? What is the worst time of day? Which is the most dangerous road? Clearly this is useful in addressing road safety issues. The problem is getting the data out in a format that is easy to understand and also gives a faithful picture of what is actually happening on the roads.

For example quite a lot of residents have complained on social media about speeding and poor driving on Macclesfield Road. **The historic SID reports confirm this, showing that typically 65-75% of vehicles drive over the 30mph limit.** This is a level which is clearly concerning. However during 2024 there was a dramatic improvement, now only about 21% of vehicles exceed the limit. **Problem solved?**

Not exactly! Looking at the data, the explanation is that the speed limit used in the calculation has been increased from 30mph to 35mph. Apparently this was done to bring the SID reports into line with the Cheshire Police prosecution threshold. This means that about 7000 vehicles a week are driving over the statutory 30mph speed limit but not being recorded. When considering these figures, remember that the SID only records vehicles travelling westwards towards the village centre. Anyone who has observed traffic approaching the railway bridge going east will know that drivers regularly put their foot down at that point. So there are actually over twice that number exceeding the speed limit.

Cheshire East Highways Authority has its own set of values which it uses to determine speeding and road safety issues.

Excess speed is an important issue in its own right, but it is only part of the big picture. It has a negative effect on other road safety issues on Macclesfield Road.

/cont...

For Vehicles:

- Blind railway bridge summit.
- Poor visibility when exiting from the Victoria Mills estate.
- Residents of houses need to enter and exit their narrow drives by car which involves a reversing manoeuvre.
- Potholes and standing water which force cyclists into conflict with vehicles and reduce the number of places where pedestrians can safely cross the road.
- HGVs are not permitted to travel along Macclesfield Road in the direction of the village centre (there is no room for two HGVs to pass outside Mandeville's). This prohibition is, however, frequently ignored and contributes to the problem.

For Pedestrians:

- Access road for Hermitage Primary School – used by parents walking children to school from Saltersford Gardens, Brooklands and the Victoria Mills estate.
- Footpath only on one side of the road over the railway bridge necessitating crossing the road to get to school.
- Narrow road with even narrower footpaths which put vulnerable road users into close proximity with speeding vehicles.
- Parked vehicles restricting the view

The Parish Council is now working on the best way of using the SID data to enable them to discuss speeding and road safety in the village with Residents, Cheshire Police and Cheshire East Council. The data from the SIDs is available to view on the Parish Council website in this format:

Site 09 - Macclesfield Road
 Q3 2024 Minimum Speed 15, limit 35
 Weekly overview for week beginning Mon. Sep. 16 2024
 Vehicle Speed Classes (Mph)

	<25	25-35	35-45	>45	Total	85th Percentile
00:00	0	37	33	7	77	40.6
01:00	0	17	12	6	35	45.0
02:00	0	12	13	7	32	46.6
03:00	0	11	13	5	29	44.6
04:00	0	19	27	10	56	45.6
05:00	1	78	114	8	201	40.3
06:00	5	172	189	15	381	40.0
07:00	19	630	277	8	934	36.5
08:00	87	1097	208	9	1401	34.1
09:00	56	943	250	4	1253	34.9
10:00	60	985	175	6	1226	34.0
11:00	50	1056	217	4	1327	34.4
12:00	41	1107	244	6	1398	34.6
13:00	45	1112	287	4	1448	35.0
14:00	42	1241	285	5	1573	34.7
15:00	59	1245	251	8	1563	34.4
16:00	38	1342	369	7	1756	35.1
17:00	53	1329	309	5	1696	34.7
18:00	35	1009	290	6	1340	35.3
19:00	17	692	170	1	880	34.8
20:00	7	443	164	8	622	36.3
21:00	7	248	95	17	367	37.9
22:00	1	158	66	11	236	37.4
23:00	1	69	39	7	116	39.1
AM Total	278	5057	1528	89		
PM Total	346	9995	2569	85		
Total	624	15052	4097	174		
Percent	3.13%	75.46%	25.41%	0.98%		

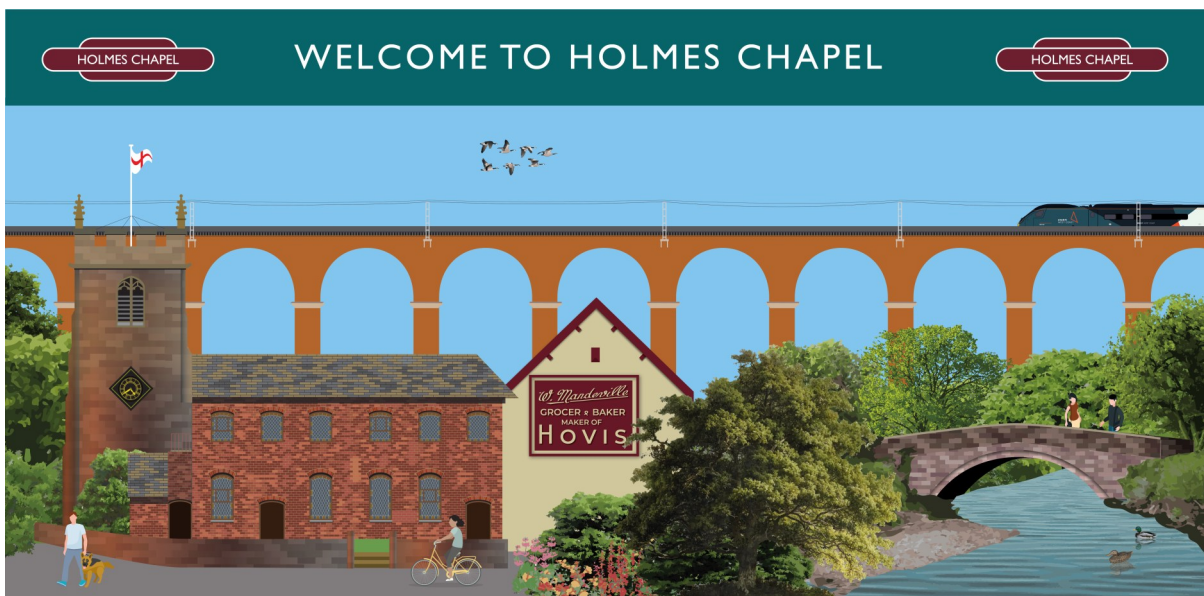
Total Vehicles : 19947
 30th Percentile : 29.0 MPH
 50th Percentile : 30.8 MPH
 85th Percentile : 35.3 MPH
 95th Percentile : 38.5 MPH
 Average Speed : 31.7 MPH
 Highest Speed : 64.0 MPH
 Total Over Speed Limit : 21.4% (4271 / 19947)

Harry Styles is in Town

Well sort of - Holmes Chapel Partnership and the Friends of Holmes Chapel Station have worked together to obtain funding through Northern Rail to commission artwork to brighten up our station. HC3, the now unfortunately defunct Community Cinema, has also played an important part in this project by allowing us to use the funds they had on closure.

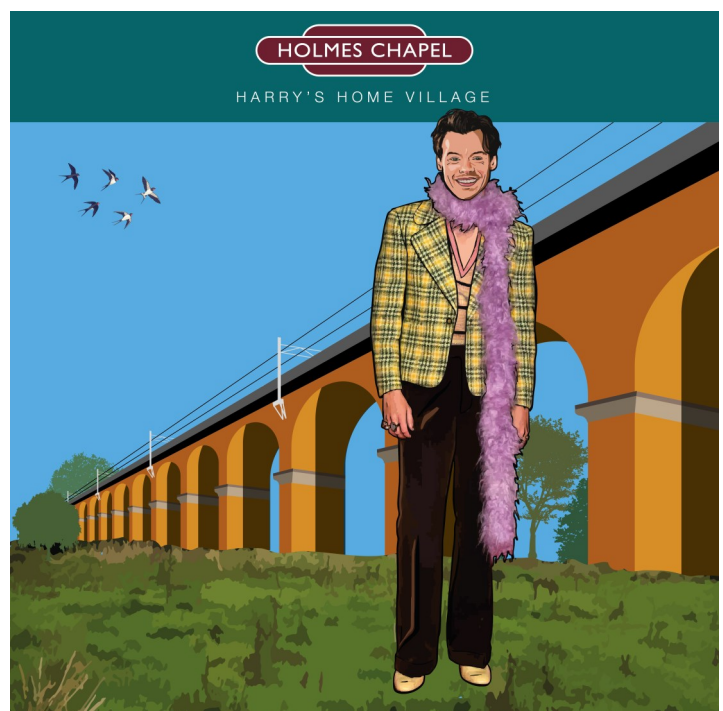
The artist Eamonn Murphy who has produced artwork for other stations along the Crewe– Manchester line has come up with some stunning images of Holmes Chapel to adorn the station.

The pictures will be unveiled on March 1st when people involved with the project locally, the funders, the artists and the media have been invited to attend.



And that surprise that was mentioned in the February issue? You probably guessed! It's Harry Styles, of course.

Many travellers who pass through Holmes Chapel station are on the Harry Styles trail, so we couldn't ignore him or them! Local artist Victoria Holland provided us with a wonderful image of Harry in front of the viaduct that his fans love to visit.



Holmes Chapel Railway Station Corner

by Tony Wright - March 2025

I hope you will forgive me!



I hope you will forgive me for including this unseasonable image of Holmes Chapel Viaduct. I have two reasons. Firstly, it reminds me of the better weather; we seem to have had a long and dreary winter. And secondly, it is a view on one of my favourite walks from Holmes Chapel Railway Station along the River Dane into Holmes Chapel village.

I love visiting St. Luke's Church and popping in for coffee at the Old Red Lion. What is meant by

'old'? Well at least 400 years. It was a Coaching Inn for much of its life and stabled teams of horses for stage coaches and mail coaches to replace tired teams with fresh ones. During the 1800s the mail coach from Liverpool to Birmingham called in each each day at midnight and the reverse each morning at three. The express coach from Liverpool to London called in at 8:30 p.m. each evening. Passengers could take refreshment or could stay for the night. It is recorded that in 1738 John Wesley (the co-founder of the Methodist movement) visited Holmes Chapel when en route from Oxford to Manchester. He rested in Holmes Chapel and preached a sermon.



As with other rural inns it had different uses. For example there were frequent auctions, in 1809 the following was advertised for sale '95 acres of very capital land, free of tythe corn, outbuildings are mostly new, of good materials and workmanship and great dimensions. There are two pews belonging to this estate in the chapel'. If you visit the Old Red Lion today there is a wonderful photograph on display showing buildings to the right of the inn, including the entrance to the stables for the coach horses (since demolished).

In 1791 an announcement was made in the Chester Chronicle about the Red Lion Inn 'John Duff, late butler, begs leave to inform the nobility, gentry, his friends and the public, that he has taken and entered upon the said inn, which he is fitting up in a neat and commodious manner and has laid in a stock of the choicest wines, liquors etc., and also a suitable number of neat Post-chaises and good Horses. He pledges himself that no exertion on his part shall be wanting in contributing to render his house comfortable to all who may be pleased to honor him with their favours'.

One of my visits to the Old Red Lion was soon after the latest refurbishment when I sat quietly for some time drinking my coffee and reading Alan Garner's 'Powsels and Thrums'. As as I left through the front door I had a vivid, strange feeling of walking back into the 21st century from the 18th century!

Just in case you are wondering the 'old' was added to the name of the inn in 1899.

Money from Santa



Members of Holmes Chapel Velo left their bikes at home in December and instead toured the village on foot with Santa's Sleigh.



The cycling club members kindly decided to donate the £275 they raised to two local charities. The money was divided equally between St Luke's Hospice & the Middlewich Food Bank.



Memory Café
invites you on
Saturday 5 April 2025
to a concert given by
Wendy Nugent
3.00pm
Holmes Chapel Methodist Church

You may recall last year we promised more musical afternoons to help lift our spirits and we are delighted that Wendy, a renowned concert pianist, and the pianist with Holmes Chapel Chorus and Holmes Chapel singers, has promised us **'a colourful mixture of piano music from popular classical pieces to arrangements of pop favourites!'** as Wendy says, hopefully something for everyone. The concert is in memory of Wendy's Dad, Bill Duke, and all those who lived and are still living with dementia. Refreshments will be served after the concert. We ask all who attend to please give generously to the collection at the concert in aid of the Alzheimer's Society.



'Tuesday Friends'
11 March 2.00 – 4.00pm

A warm welcome awaits you whether you come on your own, with a partner or with a family member or friend.

'The Misfits' ie Roy, Ray and Pete will entertain with well-known songs, monologues to make us laugh and jokes to either amuse or make us groan!

A fun quiz is either a talking point or a challenge at the tables or just come along and listen or 'people watch' over cups of tea/coffee and cake.



We look forward to seeing you at Holmes Chapel Methodist Church

No set charge but, if you are able, please pop a donation in the pot.

Should you require more details, please telephone 01477 537679

Holmes Chapel U3a News



One of the well-established members of the Holmes Chapel & District u3a, **Julian Bond**, gave us a fascinating and moving talk at February's u3a Meeting on the subject of "**Wings on my Sleeve**".

He spoke about Naval Aviation in the Cold War Years on the Aircraft Carriers HMS Eagle and Ark Royal from 1965 – 1977, sharing stories from his own experience as a Fleet Air Arm aviator. Many of the environments in which they were operating were very hostile, and the Flight Safety record was poor at that time. The challenges of taking off and landing from aircraft carriers were many and varied. Many aviators sadly lost their lives on planes including the Scimitar, Sea Vixen, Phantom and Buccaneer – without recognition and the publicity to which we are accustomed today.

At our Monthly Meeting on **Thursday 13th March**, **Kevin and Joy Siddall** will be back to explore **the DNA of British Musicals**. Through song and story they will look at the make-up of "British" Musical Theatre. During their performance, they will showcase a selection of some of the great show tunes that we know and love.

As usual, the meeting will start at 10 am at the Holmes Chapel Methodist Church. You do not need to be a member of our u3a to attend, but we do hope you will consider joining us for the modest annual membership fee of £10. Coffee and biscuits will be served in the Middlewich Room after the talk.

"How to Retire Well" is the subject of a special talk to be given by **Tony Taylor** on **Thursday 20th March** at **10 am** in the Middlewich Room **at Holmes Chapel Methodist Church**.

The meeting is open to anyone who has recently retired or may be planning to retire in the near future to join us for what will be a very interesting session.

Tony, a well-known Goostrey resident, is a regular blogger on health and well-being and on making the most of retirement from working full time. He will encourage us all to continue to be physically and socially active, which in turn helps to protect our mental health and well-being.

There is no charge for attending, but non-u3a members are asked to indicate their wish to attend, by emailing the organisers at: prcomms@holmeschapelu3a.org.uk

One You Cheshire East

Take the first step to a healthier you. Explore free, healthy living programmes with One You Cheshire East, including:

- Be Smoke Free – Quit smoking with expert treatment and support
- Active Lives – Physical Activity- Tailored support to help you become active
- Re-Shape - Adult Weight Management- Small steps, big changes, lose weight, gain confidence
- Stand Strong - Falls Prevention- Improve your strength, balance and co-ordination
- Let's Get Movin' - Family Weight Management- Get the whole family active and healthy (available in Crewe)

Eligibility criteria applies.

To find out more:

Visit: www.oneyoucheshireeast.org

Call: [0300 123 5026](tel:03001235026)

Email: OneYouCE@everybody.org.uk

Follow us on social media:

Facebook: @OneYouCheshireEast

Instagram: @oyce_oneyoucheshireeast

X: @OneYouCE



Home Grown in Holmes Chapel News



On Saturday, 1st March, we will not only be having our first dig of the season, but will be hosting our annual seed sowing session. We will be based **in the Precinct**, not at the Health Centre. Please don't park in the Health Centre car park for this event. We don't want anyone to get a parking fine.



As usual, we will give each person two seed trays. After filling each cell with seedling compost, you put one or two seeds in every compartment, cover with the compost and insert a label. Then you simply take the trays home and place them on a warm window sill and watch the seedlings come up. In May just bring back one tray to Home Grown and we will plant them in our beds for the whole community to enjoy.

Everything is provided for you, trays, seedling compost, seeds and labels. There is no cost to you. All we ask is that you bring us back one tray of seedlings.



Watch out for our display in the Tesco window from **4th March**.

Because of the Health Centre parking fines, our annual plant swap will now be held at the **George and Dragon** on 17th May.

Holmes Chapel Ecumenical Christian Aid



HomeMade Soup Lunches and Music Recital 2025

What Soup Lunch

homemade soups, bread, homemade biscuits or fresh fruit and tea or coffee served from **12noon till 1.00 pm**

When **Weekly for 4 Fridays during Lent on Mar 7th, Mar 14th, Mar 21st and Mar 28th 2025**

Where **St Luke's Church Hall, Holmes Chapel**

Pay on the door - **£5.00 per person**

For many years now, Holmes Chapel Christian Aid Committee has organised a home-made soup lunch during Lent. We are pleased to be able to run these again this year to raise funds to help those in great need around the world. Please note the dates- it will be 4 weeks only during Lent and will be held on Fridays of March 7th, March 14th, March 21st and March 28th as indicated above.

Each of the lunches will be followed by a Music Recital at St Lukes Church, starting at 1.15pm

All are welcome. Free of charge and donations to Christian Aid welcome at the church.

The Recitals programme will be as follows:

- 7th March** St Luke's Community Choir
- 14th March** Stephen Haigh- Organ
- 21st March** Slipper Band
- 28th March** Wendy McDonald- Organ

Everyone is welcome to attend both events or either event- we look forward To seeing you all for light refreshments, friendship and easy conversation!

Drop in when you can!

Any queries - please contact Caroline Wood on 01477 535746/07742930346

Co-Ordinator

Holmes Chapel Ecumenical Christian Aid Group



Holmes Chapel Village Plant Sale



Top Quality & Locally Grown

Raising Funds for The Viking Explorer Scout Unit

Will your business or organisation be purchasing bedding plants, baskets or tubs this year? Would you consider buying them from your local Viking Explorer Scouts to support their fundraising? If you would like an order form please call/text 07887 768296.

We are pleased to announce that the annual Holmes Chapel Plant Sale will take place again this year. Order forms for bedding plants, baskets and tubs will be delivered through letterboxes in Holmes Chapel at the end of March.

All funds raised support the local Viking Explorer Scout Unit.

More details will be published in next month's newsletter.

Tree Planting in the Dane Meadow

The trees we planted in the Dane Meadow are coming up to their 5th anniversary. Below is the article I wrote at the time:

Job Done! A big thank you to everyone!

A team from the Community Payback scheme came down to the Dane Meadow and cut back the brambles from the slope towards the end of February so that we had room to plant the trees. It was hard work – not least because brambles aren't the pleasantest vegetation to deal with but also because the slope is quite steep! We are very grateful to them for this, as I doubt we would have managed to clear the area quite so well otherwise.

Restrictions on communal activities were beginning to bite by Saturday 21st March but we decided to go ahead with the tree planting as the trees had already been delivered a couple of weeks beforehand and it was a case of plant them or they would die, as their roots were only in small amounts of soil. The day dawned cold but bright and volunteers aplenty got down to work with their spades. There were young and not so young people involved: the U3A planted and labelled trees to celebrate their 10th anniversary, others wanted to plant to remember a loved one, some just enjoyed planting. Everyone seemed to think it was a very positive way to spend a morning in the fresh air in these uncertain times. (NB The trees were planted a day before the first Covid lockdown was announced).



The trees are all native species: rowan, silver birch, crab apple, wild cherry and in between there are shrubs such as hawthorn, blackthorn, hazel, dogwood and dog rose. At the moment all you will see on the slope is a forest of tree guards as the trees and shrubs are all still tiny saplings. Let's hope we have given them a good start and that they will flourish, adding beauty and biodiversity to our Dane Meadow.



The 10th anniversary label on one of the u3a trees



The trees have flourished in the intervening five years. The slope is no longer “a forest of tree guards as the trees and shrubs are all still tiny saplings”. As the trees gained height and strength we have removed the plastic tree guards to allow them to develop without restriction. This is a view of the trees in February 2025 – a project to be proud of!

Hazel Sutcliffe and Friends of Dane Meadow

News from Friends of Goostrey Station

Thank you to all our supporters! You have helped FoGS to win more awards from Cheshire Best Kept Stations (CBKS). At a ceremony in Crewe on 6th February we were presented with the award for Community Engagement. We also achieved second place in the photo competition.

Ever since FoGS was formed in 2012, members - both adults and young people - have worked together to improve Goostrey station. But we are also involved with the wider community.

As resident artist at Goostrey Art Studio in the wooden building on platform one, Debbie Goldsmith regularly runs workshops which are popular with Beavers, Cubs and Rainbows. On Rose Day, while other FoGS members were busy with a fundraising competition, Debbie ran a badge making activity. She exhibited her own work during Goosfest and she has led projects at Crewe Heritage Centre and Bury Arts Association.

Deputy headteacher Becky Cowell uses the shelter on platform two to display artwork by pupils at Goostrey Community Primary School. Last year, local children and FoGS members were proud to contribute to the design and production of the unique wall hanging which commemorates the coronation, a project led by Jodrell Side WI. It was unveiled by the chair of CBKS, Mark Barker.

FoGS publicises their activities and achievements through local magazines and national organisations like Community Rail. That was how we encouraged supporters to vote for our shortlisted photo with the caption 'Keeping Up Appearances'.

One of our members maintains FoGS' website. There you can read our latest news, find information about the history of Goostrey station and discover ways to increase sustainable travel. Similar groups at Silverdale and Alderley Edge stations have contacted us through the website for advice.

FoGS has a small number of active members but we always welcome new recruits. Just contact our chair Craig Sidebotham on 01477 544111 for more information about how you could help.



FoGS shortlisted photo : Keeping Up Appearances



FoGS members with the latest CBKS awards

WHAT'S ON

Please Help Cranage to Manage our Wildflower Meadows
– Become a Wildflower Meadow Friend



Find out more and learn about our new meadows at Cranage Annual Parish meeting
Tuesday 25th March
7:30pm at Cranage Village Hall

Or contact Sue McKay, Parish Clerk, for more details
on 07871 661813 or clerk@cranageparishcouncil.gov.uk



Memory Café

always offers a warm welcome,
despite the rumour in the village,
we are pleasantly busy but never full!

Who comes? People living with dementia (ie those with dementia and their carers) : widows and widowers who have lost their partner to dementia : people who enjoy a chat, are aware that they need to be meeting people and those who particularly like to help people living with dementia.

What do we do? chat, laugh, reminisce : sit and 'people watch' : look at books : colour or paint : play table games : tackle a jigsaw or a quiz : have a sing-song : play a game of curling or skittles.

When do we meet? **Tuesday 4 and 18 March.** 10.00am – 12.00pm
(1st and 3rd Tuesday mornings every month)

Where do we meet? Holmes Chapel Methodist Church

Is there a charge? For those who are able, we ask for a donation popped in the pot please.

Anything else? Memory Café is open to those registered with Holmes Chapel Health Centre.

More details: dedavidson1@aol.com Tel: 01477 537679

SUNDAY 9TH MARCH 8 'TILL 10PM

LIVE *MUSIC*
AT THE **GEORGE & DRAGON**



PLAYING SONGS FROM THE
60'S & 70'S

PLUS OPEN MIC

Spring Litter Pick

Come along and help to tidy up Cranage

Sunday 13th April

Meet at Cranage Village Hall at 10am

A decorative border at the bottom of the poster featuring a row of colorful flowers in shades of pink, yellow, and red.

WHAT'S ON



HOLMES CHAPEL SINGERS

(Musical Director Melanie Levy)

Spring Concert from Paris to Bordeaux
(journey with us to find the best that France has to offer)

FAURÉ'S REQUIEM

Soloists • James Gaughan (bass) • Hugo Robinson (soprano - Chester Cathedral chorister)
Organist • Andrew Millinchip (with a string ensemble from RNCM)

Lili Boulanger's *Vieille priere bouddhique*
Special guests the Co-operative wind Band

Saturday 29th March 7.30pm at the Methodist Church

Tickets £14 (inc refreshments) from Peter Cotton 07734 407836 or online from
www.ticketsource.co.uk/holmes-chapel-singers www.holmeschapsingers.co.uk



so let's
Keep Singing!

Saturday 8 March 2025

Come and join us for a fun morning
singing favourites from the '60s and '70s
and one or two other eras!

10.00am

Holmes Chapel Methodist Church

No musical talent necessary, just come and enjoy!

We sing for about an hour followed by chatting
over coffee/tea and biscuits.

Keep Singing - 2nd Saturday of every month

Breakaway Dance Club

Sequence Dancing to live
electric organ music at
7.30 pm each Saturday
evening.

Open to all.

None dancers welcome.
Just enjoy the music.

Help given if you wish to
learn to dance.

Bring your own Drinks

£5 admission fee

Interval with bingo and a
raffle



Programme for March 2025

Saturday March 1st - Byley Village Hall. Organist: Elizabeth Harrison

Saturday March 8th - Lach Dennis Village Hall. Organist: Philip Randles

Saturday March 15th - Byley Village Hall. Organist: Tim Walker

Saturday March 22nd - Lach Dennis Village Hall. Organist: David Ingley

Saturday March 29th - Byley Village Hall. Organist: Phil Brown

For more information please contact David Monks on 01477 532935

WHAT'S ON

HOLMES CHAPEL SUPPORT GROUP
for ST LUKE'S HOSPICE
present a

BLUES, ROCK & AMERICANA NIGHT

WITH

5-BAR BLUES

SATURDAY MARCH 22nd 7.30pm till LATE
VICTORIA CLUB HOLMES CHAPEL
LICENSED BAR FISH & CHIP SUPPER

TICKETS £20

From Dennis Eborall
07939 150 906

dmeborall@hotmail.com



In aid of St Luke's (Cheshire) Hospice

Coffee
Morning



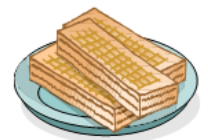
Saturday March 29th

10am-12noon St Luke's Church Hall
Holmes Chapel

Cakes & Produce Lucky Bags
Books Jigsaws

£2 incl.

Coffee and
Biscuits



Monthly Community Event: All
ages welcome as we Bridge the
Gap - from the young to the
young at heart - babies and
toddlers to grandparents and the
wider community

Bridge the Gap at Hermitage

Monthly 10am to 11am

You are invited to join us for refreshments and to join in or watch
some activities with the staff and children

Month	Date	Planned activity (subject to change)
February	Friday 14 th February	Mindfulness crafts and activities – Mental Health
March	Friday 7 th March	Shared Play – Lego, construction, jigsaws
April	No Bridge the Gap this month – Easter Holiday	
May	Friday 9 th May	Craft
June	Friday 13 th June	Shared play – Lego, drawing, construction
July	Friday 11 th July	Junior End of year Show

- All ages welcome as we Bridge the Gap - from the young to the young at heart - babies and toddlers to parents, grandparents and the wider community
 - No need to book just come along
 - Refreshments—tea, coffee, biscuits and cold drinks

your Library



Holmes Chapel Library Childrens Events



Baby Bounce

Every Monday
2.15pm to 2.45pm

Songs & rhymes in a group
specifically for babies
from birth but not yet
walking



Stories & Songs

Every Thursday
10.30am to 11.00am

Stories, songs and rhymes for
children 2 years and above.
Younger siblings of older
children welcome



Rhymetime

Every Friday
11.00am to 11.30am

Songs &
rhymes suitable for all ages.
Everyone Welcome!



LEGO Club

Every Saturday
10.00 am to 11.00pm

Come and join the fun!
Just bring your imagination



Barclays Bank

at Holmes Chapel
Library: Monday, Thursday
& Friday
930am to 1230pm
1pm to 4pm

Book appointments
on
events.uk.barclays/local
or call 0345 734 5345

Home Library Service

Are you, or someone you
know, unable to get to
the library due to ill
health or poor mobility?

If you live in the Holmes
Chapel area, our
volunteers can deliver
books to your home free
of charge.

Call us for more
information

Opening hours

Monday 10am - 5pm
Tuesday 10am - 5pm
Wednesday CLOSED
Thursday 10am - 6pm
Friday 10am - 5pm
Saturday 930am - 1pm
Sunday Closed

Ask library staff for more
information or call us on
01477 689550





VE DAY
80 
CELEBRATIONS

Monday 5th May
at Byley Village Hall



Illustrated Talk at 2.30pm
Exhibition & Film Show
Children's Activities
Refreshments

FREE ENTRY
11am - 5pm

Our Patron Sponsors

OUR PATRON SPONSORS

WE WOULD LIKE TO THANK THE ORGANISATIONS BELOW FOR THEIR FINANCIAL SUPPORT TO THE HOLMES CHAPEL PARTNERSHIP

 <p>HURSTWOOD HOLDINGS</p>	<p>HURSTWOOD HOLDINGS</p>	<p>www.hurstwoodholdings.com 40 Peter Street Manchester M2 5GP Tel 0161 220 1999</p>
 <p>MASSEY FEEDS Focused on nutrition</p>	<p>MASSEY FEEDS</p>	<p>www.masseyfeeds.co.uk Massey Feeds, Holmes Chapel Mill Holmes Chapel Cheshire CW4 8EE Tel 01477 536300</p>
	<p>HOLMES CHAPEL PARISH COUNCIL</p>	<p>www.holmeschapelparishcouncil.gov.uk Holmes Chapel Parish Council 1 Church Walk Holmes Chapel Cheshire CW4 7AZ Tel 01477 533934</p>
	<p>DUTTON BUILDERS MERCHANTS</p>	<p>www.duttonbuildersmerchants.co.uk Dutton Builders Merchants Dutton Business Park, Holmes Chapel Road Middlewich Cheshire CW10 0QZ Tel 01606 738491</p>
	<p>TMC CREATIVE LTD</p>	<p>www.wearetmc.com TMC Creative Ltd The Space 35-37 High Street Congleton Cheshire CW12 1AX 01260 295700</p>

For further details on Patron Sponsorship please visit our sponsors page
www.hcpartnership.org.uk/patronsponsors

Holmes Chapel Partnership – Working with the whole community