



Holmes Chapel Partnership Community Newsletter Issue 119 JULY 2024

WELCOME TO THE JULY NEWSLETTER!

Summer seems to have arrived in time for July! Nationally we have a general election giving us an opportunity to have our say on how the country is run. As usual there are lots of things going on at a community level, especially at the beginning of July with the Summer Celebration weekend. Those with school connections will be looking forward to the end of another school year with much needed holidays to follow.



The Parish Council invites you to join them in a weekend of celebration of our community. There is something for everyone whether young, old or in between! For full details of the events see inside.

Walk to School Day on **June 6th**, did indeed have wizard hats and fairy wings on show! See inside for more photos of the 'magic' people who walked to school that morning.



Having appointed our Tour Guides, Holmes Chapel Partnership's **Harry's Home Village Tours** got underway in June. So far all participants have been delighted with the experience - see inside for a report and photos.

Everybody is seeking nominations for its **Junior Awards**. See inside for categories and how the 2023 winner achieved his award. Hurry though nominations close on 14th July!



Graham Blake' at Holmes Chapel Station also has an award - from some Harry fans! He has also been nominated for a National Rail Award - more on these stories inside!



Best Wishes from your Partnership Team!
For more information visit www.hcpartnership.org.uk

Walk to School 2024

Postponed from May 23rd because of a weather warning (which turned out to be quite justified!) the sun shone on all the 'magic' people who walked to school on Thursday June 6th. Here are a few images from the day:



Holmes Chapel Partnership's "wizard" Chairman leads the way along Middlewich Road from the Cotton's estate. This group was accompanied by Chris Jackson, Chairman of Holmes Chapel Parish Council and Sue McKay, Parish Clerk and two representatives of the Fire Service.

Diane Tams Vice Chair of the Parish Council and Tina Cartlidge, Council Clerk, joined the group (see below) which set off from Brooklands to walk along Manor Lane and Macclesfield Road.

Each route has its hazards which Holmes Chapel Partnership and the Parish Council have been pointing out to Cheshire East Highways for several years now: narrow pavements, heavy traffic and a lack of safe and suitable places to cross these busy roads. One day we might get some action!



On this particular day a fairy had a "guardian" fireman to help us find a gap in the traffic but otherwise how are children from Saltersford Gardens and the new Victoria Mills estate supposed to cross Macclesfield Road safely in order to get to Hermitage School?



And it's not just a lack of crossing points - these photos taken during the Walk to School perhaps illustrate why more parents don't walk with their children to school on a regular basis!



Harry's Home Village Tours

June has been a busy month for the Partnership which started with the launch of the Harry's Home Village Tours.

We kicked off with an exclusive feature on the BBC at the end of May. The BBC came to do a special preview tour with us and we were then invited onto the BBC Breakfast sofa for a live interview!

Tour Guides Ben and Gillian (left) and Karoline Peach of Holmes Chapel Partnership



A few days later we had another preview media tour which included local, national and even international journalists from media outlets that included The Guardian, The Sun, Manchester Evening News, Knutsford Guardian, Congleton Chronicle, The i, RTL Germany and SWNS. This has resulted in numerous online, print and radio articles all over the globe, such is the media power of Harry Styles! You can see a small sample of the press articles on our website: <https://www.hcpartnership.org.uk/inthepress>

Our first Tour kicked off on Saturday 8th June with NBC journalists in tow - no pressure there! Our new Tour Guides did a great job with lots of positive feedback.

Our second tour date of 15th June sold out rather quickly and we had to schedule a second tour which started an hour later. Could this have been something to do with Taylor Swift playing in Liverpool that same weekend? Taylor has of course visited Holmes Chapel herself. She spent time here with Harry Styles in 2012 when they were dating and famously had a meal at Fortune City on London Road. The weather was unfortunately very wet but a good time was had by all our guests.

Each person who books on a Tour receives their own Village map (see left) as a keepsake to remember their visit. Thank you to Matt and Katy O'Regan of Arch Publications for the fabulous design, and also to all the local business who have taken part and included a special offer just for our Tour Guests.

A question we're often asked: **Why are we doing these tours anyway when it's free to walk around the village?**



We created the free map over a year ago so visitors to the Village could find their way around without using the busy and dangerous A535 and these are still available for those who want to walk themselves.

We still have way more visitors to the village who do not book onto a tour. For others, being part of a group of like minded people is something worth paying for. We've actually seen that a lot of tickets are being sold individually, and we've heard many a story about Harry fans who have met for the first time at the train station and completed the route together.

Harry's Home Village Tours Cont...

Not to mention that our Tour Guides are armed with a plethora of facts about Holmes Chapel and Harry Styles and can add extra local knowledge and anecdotes for our visitors. One of our Tour Guides used to have a young Harry Styles in her house regularly when her son went to school with him - our Tour guests are quite star struck to meet someone who actually knew him as a teenager!

HARRY'S HOME
Village Tour 2♥24

"Harry was right. The Viennese Fancies from Mandeville's Bakery are epic."

We've had feedback from our local landowners that litter and not using the correct paths through the fields are issues they regularly encounter. Our Tour Guides are equipped with gloves and rubbish bags so they can do a litter pick while at the Viaduct. As well as being unsightly, rubbish left on the ground can be fatal to the cattle that graze around the structure. Our Guides know the Countryside code and will keep to the Public Right of Way / Permissive paths. It's not always obvious which route you should take across a field.

The Tours are also helping to preserve the Grade II listed Viaduct by educating people not to deface it by writing on it (it is an offence to graffiti after all), and each Tour guest receives a slate heart for them to decorate and leave at the Viaduct. Hearts can be bought at Dale's by anyone wanting to leave a message at the Viaduct. Our Guides also carry a first aid kit should anyone need it on their way to and from the Viaduct and we can provide a loan of walking poles to help visitors navigate the often slippery slopes.

"It was an amazing day. I loved every minute of it."

HARRY'S HOME
Village Tour 2♥24

Lastly, any profits raised by the Tours will go back into our Holmes Chapel Community. We'll hopefully be able to provide an update on where any money raised will go later in the year when the Tours finish in September.



Our wonderful Tour Guides with their own message on a slate Heart.

"I can't believe we made it up here. Thank you for the amazing tour"

HARRY'S HOME
Village Tour 2♥24

Speedwatch

The Speedwatch team met, as promised, with PCSO Pam Graham in The Massey Room at St Luke's Church Hall on Wednesday June 12th at 7pm for a training session. It was a fairly relaxed affair as we have all been trained before and know the ropes but we had to commit in writing to certain conditions - three of us need to go out at a time and there are strict rules of engagement with drivers.



Pam has to be trained on a new computer system that gives her the data needed to send out letters to the speeding drivers whose number plates we have noted. This will happen in early July, so we might just get out in our hi-vis with the speed gun before the schools break up for the summer. We have approved locations on Macclesfield Road and Chester Road.

Our aim in conducting these Speedwatch sessions is to support the Holmes Chapel Partnership's Safe Walking Routes to School campaign but safe walking routes to schools mean safer walking for everyone. More walking equals fewer cars, less pollution and fitter people – is that not a state of affairs that we all want?

Please do get in touch if you could join the team and do your bit for your community, by emailing me at hazel.sutcliffe@hcupartnership.org.uk

Hazel Sutcliffe

The Methodist Church wish Reverend Yvonne a Happy Retirement



A Methodist Church Family lunch held at the George and Dragon was the occasion for members of the Church and friends to wish Revd Yvonne and Pete well, as Yvonne retires from full time ministry and they move away from Holmes Chapel to live nearer to some of their family.

Thanks were given to Yvonne for her ten years of being superintendent minister in Dane and Trent Circuit of

which Holmes Chapel is one of sixteen Churches.

At the lunch, Yvonne and Pete were presented with gifts from Holmes Chapel and Goostrey Methodist Churches.

Holmes Chapel and Goostrey Churches are looking forward to the arrival of their new minister, Revd Anna Carrington who, with her husband and son, will be moving into the village in August.



Parish Council News



Summer Celebration

Holmes Chapel Join the Party! The Summer Celebration weekend is coming! There's something for everyone!

Friday 5th July 6-11pm - Village Centre Street Party with jazz, Dane Sound radio, a wondering magician and fabulous offerings from our local businesses.

Saturday 6th July 2-9pm

Free Family Fun event at the **Holmes Chapel Community Centre** with live bands, family activities, great food and more!

7pm Holmes Chapel Chorus 'For the Love of Music' at the **Holmes Chapel Leisure Centre**. Bring your picnic for an interval with a difference. Tickets cost £10.

Sunday 7th July - 12-4pm Holmes Chapel Village Fair

Head down to the Victoria Club for great family entertainment - stalls, crafts, gifts, classic cars, raffles, BBQ, dog show and more!

More information about all the events can be found on our website:

[Summer Celebration | HCPC \(holmeschapelparishcouncil.gov.uk\)](http://holmeschapelparishcouncil.gov.uk)

Holmes Chapel Remembered

On 6th June, people from Holmes Chapel gathered to commemorate the 80th year since the D-Day landings began in 1944. At 11am the Holmes Chapel Royal British Legion laid two wreaths and held a two minute silence in honour of the occasion. It was a pleasure to listen to the Church bells ring out for peace at 6.30pm. The Parish Council, along with Churches Together, organised a special service in the evening which was followed by the reading of the International Tribute, the laying of a wreath and the lighting of a beacon. It was great to see our residents support this event and to honour those who made the ultimate sacrifice for our freedom.



We thank Mr Paul Bevan for the generous loan of his tank which was parked alongside the church for the event. It was a sobering reminder of the reality of war.

These events do not happen by themselves. To the primary school children for creating beautiful pictures, to those who decorated the church yard, to the PA team from Churches Together, to Sam Dale's and Morrey's for donating the gas for the beacon, to those who organised and led the service, to the tribute readers, to the beacon lighters, to the bell ringers, to the stewards and finally to all members of the organising committee - thank you for all your hard work behind the scenes and on the day to make this event such a special day. We hope the residents of Holmes Chapel found it a poignant and special evening.

Community Centre

The Parish Council has recently funded some patching work to two of the Community Centre car parks. These will also be relined in due course.

Stay up to date

Keep an eye on our website for news and dates, agendas and minutes of all our meetings [Meetings | Holmes Chapel Parish Council](http://holmeschapelparishcouncil.gov.uk)

The National Rail Awards



"The National Rail Awards recognise outstanding achievements in Great Britain over the past year, but particularly look to reward initiatives which demonstrate innovation and measurable improvements in performance which can be rolled out across the railway. By doing so, the Awards seek to promote the industry's longer term success and sustainability, which depends on a highly skilled, diverse, motivated and engaged workforce and exceptional leaders."

Holmes Chapel Station's Graham Blake has been nominated for this award by his boss in the category:

OUTSTANDING PERSONAL CONTRIBUTION

People are at the heart of the railway. This award recognises railway men and women in any front-line role who have performed **above and beyond the call of duty**, to significant effect.

The awards take place on 12th September in London but Graham has to first make the trip to London on July 2nd to make a presentation to the panel who choose the winners.

As we all know, Graham has always been an efficient, friendly, helpful and smiling presence in the ticket office to all those who travel by train. However since Harry Styles fans have been visiting in ever greater numbers, his role has extended way beyond the duties he is actually paid for carrying out!

The visitors arrive at Holmes Chapel Station not only from different parts of the country but different parts of the world and when the Ticket Office is open, Graham is there to offer guidance by handing out the free maps provided by Holmes Chapel Partnership, offering to store their suitcases while they walk around the Harry sights, lending them umbrellas and plastic bags to stop their shoes getting muddy and above all chatting and sharing his Harry experiences with them. He has established a Visitor's Book for fans to leave messages, which had reached three editions by Harry's 30th birthday on Feb 1st this year - not to mention the presence (albeit in cardboard) of Harry Styles himself!



We would like to wish Graham well - he really is the life and soul of Holmes Chapel Station!

Holmes Chapel Railway Station Corner

by Tony Wright - July 2024



Station Master, Graham Blake received a heartwarming gift in early June. It was a framed, hand-written and drawn 'thank you' from Kiera and Mia from Peterborough. They had made a special visit to Holmes Chapel because of our connection with Harry Styles. It reads 'Graham, thank you for your time, stories, and for loving Harry as much as we do!'

After taking this photograph and chatting with Graham I headed for the annual Etruria Canals Festival. Services from Holmes Chapel connect with the East Midlands Railway to Stoke-on-Trent Railway Station. A 12 minute Journey to Crewe followed by a 21 minute journey from Crewe (on the service to Newark Castle). Then a 20 minute walk along the Trent and Mersey Canal towpath brings you to the Etruria Industrial Museum, including Shirley's Etruscan Bone and Flint Mill, erected in 1857. See image to the right.



The Festival included a narrowboat gathering plus workshops, performances, exhibitors, craft stalls, street food and a beer tent. This year's theme celebrated 50 years since the re-opening of the Caldon Canal which joins the Trent and Mersey Canal close to the museum. You can also see the Etruria Industrial Museum Canal Warehouse which was used by organisations such as the Trent and Mersey Canal Company and later the British Waterways Board for storing goods and canal maintenance equipment. The lock by the warehouse originally had a roof covering and was used as a gauging lock. Boats were 'gauged' to assess the load and a toll was charged accordingly. Returning home in the evening, waiting for my connection to Holmes Chapel, I was fortunate to glimpse the GWR 4073 Class 5043 'Earl of Mount Edgcumbe' leaving Crewe Railway Station (see below).



This British Railways steam engine was built in March 1936 at Swindon Works and originally named 'Barbary Castle'.

Everybody launch Junior Awards nominations for 2024



Everybody Health & Leisure are delighted to announce that nominations for the 2024 Everybody Junior Awards are now open. These awards will recognise and celebrate children aged 4-15 years for their inspirational efforts and contributions to local sporting and activity success in Cheshire East between 19th October 2023 – 14th July 2024.

2023 Junior Awards L-R: Andrew Kolker Chairman at Everybody Health & Leisure, Peter Hargreaves Chairman's Award Winner, Chris Jackson Holmes Chapel Parish Council, Diana Tams from Holmes Chapel Parish Council*

You can nominate in categories including:

Active Family of the Year – A family that has shown immense dedication to remaining healthy and active together within the past 12 months.

Rising Swim Star, for ages 4-8 years, 9-15 years – A swimmer participating in the Everybody Swim programme who always listens to instructions, is enthusiastic to achieve and gifted in the water. They also support other learners in the group and the swimming teacher too.

Sports Personality of the Year, for ages 5-8 years, 9-11 years and 12-15 years – Individuals who have competed and achieving at local, regional or national level in a sport or several sports, shown an ability to lead by example and support others.

Everybody Junior Member of the Year – An Everybody member who has shown great dedication to keeping healthy and active.

Unsung Junior Hero Award – Someone who has given their time to a local sports club or community group, ensuring that they can provide their services to as many people as possible.

Previous winners include skilled Football Players, Karate stars, Brazilian Jiu Jitsu enthusiasts and many more!

Kerry Shea, Director of Health & Communities at Everybody Health and Leisure shared: *"We are very excited to welcome back the Everybody Junior Awards for 2024 in celebration of our 10th birthday. They are one of our favourite awards of the year and we love hearing the fantastic stories of our young local athletes. We can't wait to read all your nominations and we are sure there will be some difficult decisions when it comes to picking the winners, so please get your nominations in today!"*

After the success of last year, presenting the Junior Awards within local clubs and school assemblies, Everybody are delighted to be doing the same this year and cannot wait to celebrate with the nominee's family, friends, teachers and club representatives.

Nominations for the Everybody Junior Awards 2024 will close on 14th July 2024.

Find out more information and how to nominate here:

<https://everybody.org.uk/about/everybody-junior-awards-2024/>

** Peter is currently doing stage 1 swimming lessons at Congleton Leisure Centre. He has come so far considering he would not even go near water 6 months ago. He has anxiety and he has now overcome this all thanks to the swim teachers at Congleton Leisure Centre. Peter struggles a lot at school with activities but with continuous encouragement and gaining his confidence in water, he is absolutely smashing it! Peter winning this award will show that for other children like Peter who have personal issues, it is possible to thrive and be the best they can be whether they have additional needs or not. For Peter to be recognised for what a bright, young boy he is and for him to know that anything is possible is amazing. Congratulations Peter on winning Everybody's Chairman's Junior Award.*

Summer Celebration Event at the Community Centre

Everybody Health & Leisure [Everybody], are delighted to be part of the Holmes Chapel Parish Council Summer Celebration event at Holmes Chapel Community Centre, on **Saturday 6th July, 2pm-9pm**. Come and join us for a fun filled afternoon for the whole family, a **FREE** entry event, with Local Live Bands, Meatloaf Tribute Act, Bar, BBQ, face painting and so much more.



Jade Stone, the General Manager at [Holmes Chapel Community Centre](#), said:

"We are so excited to host this event and welcome everyone from Holmes Chapel and the surrounding areas. It's a wonderful opportunity for the community to come together and enjoy a day of great music, delicious food, and good company."

Attendees can look forward to a variety of musical performances, engaging activities for all ages and a chance to spend quality time with family, friends, and neighbours. This event is designed to celebrate the vibrant community spirit of Holmes Chapel and provide a welcoming space for everyone to enjoy the summer vibes.

Stage Running Order:

- 14:00-14:30 Kids Fun
- 14:30 – 15:00 KE Dance
- 15:00 – 17:00 Meatloaf
- 17:15 – 18:00 Koan
- 18:00 – 18:45 Boneyard Alley
- 18:45 – 19:00 Mel Levy
- 19:00 – 19:45 Dr Bruff and the Push
- 20:00 – 20:45 Dr Bruff and the Push
- 21:00 - Event ends



Food and Drink: Everybody's Taste for Life Café will be offering:

Pizza - Refreshments Station – Bar – BBQ - Ice Creams

To find out more about Holmes Chapel's summer celebration event and to secure your ticket, please visit www.everybody.org.uk/holmes-chapel-summer-celebration-event/

The Holmes Chapel Gooseberry Society: A Legacy of Competitive Gooseberry Growing

In the picturesque village of Holmes Chapel, nestled within the serene landscapes of Cheshire, England, a unique and enduring tradition thrives. The Holmes Chapel Gooseberry Society, established in 1824, stands as a testament to the village's rich agricultural heritage and community spirit. This venerable society, now celebrating its bicentennial, has the distinction of being the oldest of the many community clubs and activities that define Holmes Chapel's lively social calendar.

Historical Roots

The Holmes Chapel Gooseberry Society was formed during a time when competitive gooseberry growing was a widespread and cherished activity across the North West of England. In the 19th century, gooseberry shows were prevalent in agricultural areas and mill towns, with more than 120 competitions held across Lancashire, Yorkshire, Cheshire, Derbyshire, and Staffordshire at their zenith. These events generated considerable local excitement, drawing together communities in friendly rivalry to cultivate the heaviest and most impressive berries.

The society's foundation in 1824 marked the beginning of an unbroken tradition that has witnessed countless changes in society and agriculture. Despite the decline in the number of gooseberry shows over the years, Holmes Chapel's commitment to this horticultural pursuit has never wavered. Today, the Holmes Chapel Gooseberry Society continues to uphold this historic practice, preserving a link to the village's past while fostering a sense of camaraderie and continuity among its members.

The Competitive Spirit

At the heart of the Holmes Chapel Gooseberry Society is the annual gooseberry show, held on the last weekend in July. Here, 12 regular growers from the society's 18 members present their finest specimens in a bid for glory. The weight of each gooseberry is meticulously recorded in pennyweights and grains, a traditional measurement system that adds to the event's nostalgic charm. The competition is fierce, with entrants vying to produce the heaviest berry—a feat that requires not only horticultural skill but also a deep understanding of local growing conditions.

One of the most notable figures in the history of competitive gooseberry growing is Kelvin Archer, who has achieved the remarkable feat of growing the heaviest gooseberry on more than five occasions. Archer's largest berry, weighing in at around 39 pennyweights (2.18 ounces), is comparable in size to a hen's egg and holds the Guinness World Record for the heaviest gooseberry. His achievements underscore the dedication and expertise required to excel in this niche but beloved field.

Contemporary Relevance

Today, the Holmes Chapel Gooseberry Society remains a beacon of local tradition and pride. While the number of gooseberry shows has dwindled, with only a few surviving in Cheshire and one in Egton Bridge, Yorkshire, the enthusiasm of the growers has not diminished. Around 100 entrants still participate in these events, maintaining a vibrant and competitive atmosphere.

The society not only celebrates the art of gooseberry growing but also serves as a cultural touchstone for Holmes Chapel, connecting generations and nurturing a sense of community. It exemplifies the village's enduring love for its heritage and its commitment to preserving unique local customs. The Royal Horticultural Society (RHS) is actively researching the history of these societies and is collecting stocks of all the heritage varieties grown in the area. This collection will be housed at RHS Bridgewater, highlighting the cultural significance of this tradition.

Show Day and Prizes

On show day, prizes are awarded not only for the heaviest berry but also for categories such as triplets, twins, and maiden growers. The berries come in four main colours: white, yellow, green, and red. Historically, prize money in the 1800s was equivalent to a month's salary for some participants, emphasising the importance of strict adherence to rules. Appointed witnesses observed the picking of the berries and sealed them until show day to prevent cheating. Although the process today is more relaxed, the traditional format is still followed, and winning the Premier Berry accolade is celebrated across the association.



This year's show will take place on **Saturday 27th July 2024**
At **The Victoria Club** Victoria Avenue Holmes Chapel CW4 7BE

Starting at **1pm to approx 5pm**

The berries will be on display in the Bar after the show

Free Admission Bar open All welcome

Looking Forward

Next year marks the society's 200th show, and plans are underway to celebrate this bicentennial event with the prestige it enjoyed in its heyday. Members are proud of the society and its legacy, and they welcome new participants to join in this unique tradition. The current chairman is David Monks, with Malcolm Quayle serving as secretary and Andrew Anderson as vice secretary. Anyone interested in learning more about the society or joining can contact Andrew Anderson at a.anderson828@btinternet.com.

The Holmes Chapel Gooseberry Society is more than just an organisation dedicated to growing large berries; it is a living legacy of a bygone era, a celebration of agricultural skill, and a cornerstone of community life in Holmes Chapel. As it enters its third century, the society continues to inspire and unite its members, proving that even the most niche traditions can flourish with dedication and passion.

Andrew Anderson

Memory Café enjoys a ‘Summer’ outing!

One would have thought a Summer outing in June would have lent itself to wearing short sleeves, sun tan cream and sitting under parasols, however, this year for Memory Café it was a case of just posing for a photograph by the parasol but then sitting under patio heaters or in the Summer house, wearing coats and, even a blanket as an extra layer!



Susan and Derek, very kindly invited Memory Café, along with some friends from Tuesday Friends, for coffee and cake in their garden. It didn't really matter that there was a chilly wind as the garden, amazingly decorated for Memory Café to walk around and admire, along with excellent company gave rise to much chatter and laughter and a memorable occasion for all.

Hopefully the sun will shine throughout July and you will be given a warm welcome to **Memory Cafes**

on the 2nd and 16th July 10.00am – 12.00pm and Tuesday Friends on the 9th July 2.00-4.00pm. Both are held at Holmes Chapel Methodist Church. More details:

dedavidson1@aol.com Tel: 01477 537679

Memory Café invites you to
The DNA of BRITISH MUSICALS
 Performed by Joy & Kevin Siddall
Saturday 20th July at 2.00pm
 Holmes Chapel Methodist Church
 Knutsford Rd. CW4 7DE

In memory of Peter Steel and all for whom the music at Memory Café touched their lives

Joy and Kevin take us to the origins of the British Musical, its development, and its popularity. They will perform some of the great show tunes from the best musicals. Join us as we raise the DNA curtain on the musical theatre of the West End. If you like BBC's "Who do you think you are?" you'll like this.

Alzheimer's Society
 Refreshments of tea, coffee and cake.
 Donations for the Alzheimer's Society.

Memory Café are hoping that you are free on the afternoon of 20 July and will come along to this event. You will read that it is especially in memory of Peter Steel. Peter, a much-loved member of Memory café, sadly died last year and donations in his memory were given to Memory Café. Along with all who have attended Memory Café, Peter loved music, and we felt it fitting that we used some of the donations for our community to meet together and enjoy music.

Joy and Kevin recently took the U3A coffee morning on a Musical Meander through the UK and we know they were very much enjoyed and 'not to be missed'. Joy and Kevin assure us that their musicals programme is a 'lovely one'.

Joy and Kevin will entertain for about an hour and then all are invited to stay for coffee/tea and cake.

There is not a charge but we hope that donations will be popped into the collecting buckets to enable us to help raise much needed funds for the Alzheimer's Society.

Open Garden and Grounds

Rowley House, Forty Acre Lane, Kermincham CW4 8DX

Tim and Juliet Foden
are opening their beautiful garden and grounds once again
under the National Garden Scheme

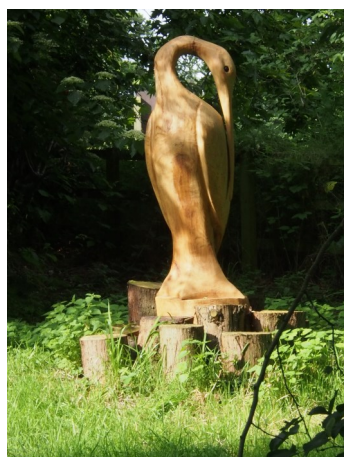
Sunday 7th July 11am – 4.30pm

£6 entry - children free

Cards accepted for entry but strictly cash for afternoon teas!



The idyllic wildflower meadows are still colourful and are interspersed with woodland. The fine wood sculptures of Andy Burgess add an extra perspective to your stroll.



By July the herbaceous borders will be in full bloom and looking great. The landscaped gardens with their interesting collection of trees and plants offer a variety of vistas from pond to shade to courtyard garden.



Once again the Ladies of Swettenham Parish will be serving teas and their delicious home made cakes in the garden . The proceeds go to St Peter's Church, Swettenham.

There is plenty of seating around the gardens and meadows. The garden is mostly wheelchair accessible but not the meadows.

Adequate parking on site and toilets. Dogs welcome.

To get there take Macclesfield Road out of Holmes Chapel follow the A535 to Twemlow and turn right at the Yellow Broom.

The 14th Annual u3a AGM was held on Thursday 13th June at the Methodist Church. Ruth McNeil, the Chair of the u3a, thanked the Committee for working so hard to keep things going without a Chair or IT Lead for the first term, until she was persuaded to join us in December 2023.

We have a vast number of different groups and all sorts of activities to choose from. The Out and About group run by Heather Jones has been particularly successful and enjoyable. The Treasurer, Catherine Struselis, gave her report and commented on what a whirlwind first year it had been for her as a 'newbie'! It's a challenging enough job without having to cope with the problems of working with a closed Barclays Bank!

The number of members has increased from 787 to 858. 115 members attended the meeting, and 34 people sent in Proxy forms, so we were safely 'quorate'. All committee members remained in post. Ruth expressed her gratitude for the commitment of the members and stated how lucky we were to have such a thriving group in the village.

The AGM was followed by an interesting talk from Jill Booth about Dane Sound Radio - a radio station run by the community for the community. Jill, who has been involved from the start, told us about its origins through to its current configuration. She encouraged us all to tune in to danesound.com or call it up on your smart speaker and get involved in the Dane Sound community.

Looking forwards

Having made a change to the Constitution the Committee plans to do further work on the Succession strategy in the coming year 2024/2025. We also aim to extend the wide range of activities with the help of members, improve the website to make it easier to use and become more active in the local network.

There will be a **u3a Showcase** coming up on **Saturday 31st August** - note the venue of **St. Luke's Church Hall** - where people will be able to come and see all the activities on offer.

Talks

The talks programme is paused during July and August but coming up on **Thursday September 12th** we have the return visit of **Brian Groom**, who has written a new book about Manchester and Mancunians. He would like to share this with us, so if you come from Manchester, or know it well, do come along and find out how Manchester shaped the modern world.

David Skillen will be our speaker for **October 10th**, entitled 'Can You Hear Me Mother?' - The Art of the Monologue, which should be fun!

Rosie Lee, a shepherdess from Weaver Dairy House Farm, will share her tales of sheep and shepherding on **November 14th**.

Finally, for our Christmas meeting on **December 12th**, **Kathryn Davies** will bring her 'Christmas with Rock Choir' to entertain us and encourage us to singalong.

Middlewich & District Foodbank Marks 10 Years of Supporting the Local Community

On Thursday, June 6th, Middlewich & District Foodbank marked its 10th anniversary with a heartfelt gathering of approximately 60 individuals who have been integral to the charity's journey. The event saw a diverse group come together to commemorate this milestone, including past and present volunteers, Trustees, representatives from The Trussell Trust, the Mayor of Middlewich Cllr. Simon Whittaker, business sponsor, Project One, and members from The Holmes Chapel Partnership. This gathering was a testament to the collective community effort in providing a vital lifeline to those suffering from food poverty.

Rev. Simon Drew, Chair of the Trustees, welcomed the guests and shared the foodbank's history and growth. Simon spoke of the journey from the early days when Churches Together, inspired by a passage from the bible (Matthew 25:34-35), decided to establish a small independent foodbank. Initially based at MCC (Middlewich Community Church), the foodbank officially opened in May 2014 with warehouse space provided by Pochin's. Simon highlighted the dedication and compassion that have driven the foodbank's success over the years.

David Cooke, one of the founding members, was invited to cut the ribbon of the new warehouse premises. David spoke to the group and reflected on the significant changes over the years, sharing stories of early challenges and triumphs. He recounted how they operated from various temporary locations, including the kitchen cupboards at MCC. David humorously noted the unexpected adventures, such as dealing with water pipe bursts and the scramble for new warehouse space. "When we started, we could never have imagined the scale of need we would eventually address," he remarked. His speech underscored the importance of adaptability and the unwavering support from the community in sustaining the foodbank's mission.

Nicky Harris, the Foodbank Project Manager, expressed her gratitude to everyone who has contributed over the past decade. "Every single person here has made an impact," Nicky said. She shared some compelling statistics, revealing that in 2023 the foodbank fed 1237 adults & 987 children (2224 total) with 27.5 tonnes food, demonstrating the critical role it plays in the community. Nicky also detailed the recent move to a new warehouse space, highlighting the perseverance and dedication of the volunteers and trustees throughout the transition. Nicky urged community members to ask around their network for additional new volunteers.

She also highlighted the current fundraising project to acquire a larger vehicle, ideally a van, to help transport food from the warehouse to various distribution points where food is provided to clients.



Middlewich Foodbank cont...

The event was a poignant reminder of the power of community spirit and collaboration.

As attendees shared stories and reflected on their shared mission, the atmosphere was both commemorative and resolute in continuing support for those in need.

In conclusion, the 10th anniversary gathering of Middlewich Foodbank was not only a reflection on past achievements but also a commitment to future endeavors in the fight against food poverty.

As the community looks ahead, the continued support and dedication of everyone involved will remain crucial in ensuring that the foodbank can meet the needs of those it serves.



Photos: Gail Griggs

A Topical Poem?

TINKER TAILOR SOLDIER SAILOR
 RICH MAN, POOR MAN, BEGGAR MAN, THIEF
 WHAT MOTLEY CREW HAVE WE GOT HERE?
 A GROUP OF MEN WHO RULE THEIR PEERS
 SOME ARE CHOSEN ON THEIR MERIT
 SOME SIT ON SEATS THAT THEY INHERIT
 THE ONLY JOBS THEY HAVE TO DO
 IS THEIR VERY BEST FOR ME AND YOU
 THEY MEET, THEY TALK AND THEN DEBATE
 IN THE END THEY DECIDE OUR FATE
 IS IT FOR GOOD OR IS IT FOR ILL?
 THEY ARE SUPPOSED TO DO OUR WILL
 DO WE TRUST THAT THEY DO THEIR BEST?
 SOME MAY DO BUT NOT THE REST
 WE HAVE TO BELIEVE THE SYSTEM WORKS
 AND HOPE THEY ARE NOT JUST A LOAD OF
 BERKS!!

Pat Alston, u3a Creative Writing Group

Want to Dance?



Breakaway Dance Club invites you to join them at their weekly sequence dancing sessions. Dance to live music on a Saturday evening! We start at 8pm and tickets to the dance cost just £5. You bring your own drinks and nibbles, but there's a raffle to contribute to and a chance to play a round or two of bingo as well.

The dances take place at
Byley Village Hall on **6th July**
Lach Dennis Village Hall on **13th & 27th July**
Wincham Community Centre on **20th July**

For more information contact David Monks on 01477 532935

JOIN THE PARTY!

HOLMES CHAPEL
Summer
CELEBRATION

A WEEKEND OF
CELEBRATION

5-7TH
JULY

STREET PARTY • FOOD & DRINK
LIVE MUSIC • CRAFTS, GIFTS & FUN

5TH – VILLAGE CENTRE
STREET PARTY

6TH – COMMUNITY CENTRE/
LEISURE CENTRE EVENTS

7TH – VICTORIA CLUB -
VILLAGE FAIR



KEEP UP TO DATE WITH ALL SUMMER CELEBRATION
NEWS AT HOLMESCHAPELPARISHCOUNCIL.GOV.UK/
SUMMERCELEBRATION OR SCAN THE QR CODE



Holmes
Chapel
Chorus



invites you to join them

“FOR THE LOVE OF MUSIC”

SATURDAY 6TH JULY 2024

7.00pm

Small Hall

Holmes Chapel Leisure Centre

TICKETS: £10

Raffle fundraiser for St. Luke's Hospice

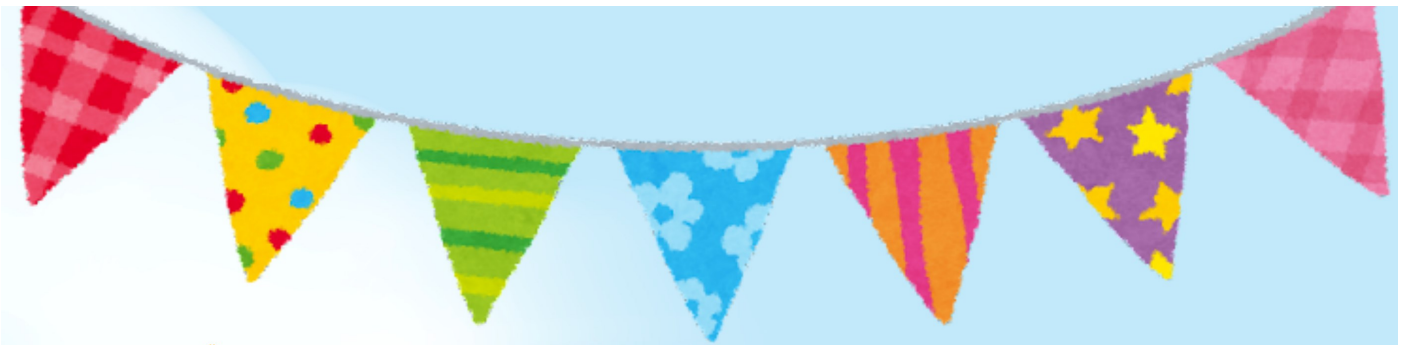
To book tickets and reserve a table:

Contact any Choir member, or

email holmeschapelchorus@gmail.com, or

phone Kate on 07833-896626

Bring your own picnic for an interval with a difference.



Holmes Chapel Village Fair



Sunday 7th July

12 - 4pm

The Victoria Club
Holmes Chapel



Over 60 stalls & activities for all the family

Crafts, Gifts, Art, Local Produce

Games, Rides & Raffles

Dog Show, Face Painting, Magician

Circus Skills, Classic Cars

BBQ, Licensed Bar, Ice Cream

Tea Tent, Cakes, Sweet Treats

Community Groups

Dane Sound Community Radio



Join us on Facebook: [HCVillageFair](#)



WHAT'S ON

your Library  Cheshire East Council

Holmes Chapel Library Childrens Events



Marvellous Makers

Get Ready for a Reading Adventure!

Come down to Holmes Chapel Library, join the Summer Reading Challenge and collect your free pack

The Summer Reading Challenge starts **Saturday 6th July**

Look out for events & activities at the Library throughout the Summer

Rhymetime

Every Friday
11.00am to 11.30am

Songs & rhymes suitable for all ages. Everyone Welcome!



Stories & Songs

Every Thursday
10.30am to 11.00am

Stories, songs and rhymes for children 2 years and above. Younger siblings of older children welcome



Baby Bounce

Every Monday
2.15pm to 2.45pm

Songs & rhymes in a group specifically for babies from birth but not yet walking



LEGO Club

Every Saturday
10.00 am to 11.00pm

Come and join the fun! Just bring your imagination



Opening hours

Monday	10am - 5pm
Tuesday	10am - 5pm
Wednesday	CLOSED
Thursday	10am - 6pm
Friday	10am - 5pm
Saturday	930am - 1pm
Sunday	Closed

Ask library staff for more information or call us on 01477 689550

Bridge the Gap



Hermitage
Primary School

Monthly Community Event: All ages welcome as we Bridge the Gap - from the young to the young at heart - babies and toddlers to grandparents and the wider community

Bridge the Gap at Hermitage

Monthly 10am to 11am

You are invited to join us for refreshments and to join in or watch some activities with the staff and children

Month	Date	Planned activity (subject to change)
July	Friday 12th July	End of Year Show

- All ages welcome as we Bridge the Gap - from the young to the young at heart - babies and toddlers to parents, grandparents and the wider community
- No need to book just come along
- Refreshments—tea, coffee, biscuits and cold drinks

Hermitage Primary School, Hermitage Drive,
Holmes Chapel, CW4 7NP

CLONTER FAIR & CAR BOOT SALE

In Collaboration with
Congleton Beartown Classic Car Club
In Aid of
Visyon &
Clonter Farm Music Trust

Sunday 1st September 2024
10am - 4pm

A great day out for all the family,
from lucky finds amongst the Car Boots, to Hand Made Craft & Vintage Clothes Stalls,
with many other attractions, from Good Old Fashioned Games & a Fortune Teller,
to Face Painting & Owls, & a Dog Show!
With Live Music throughout the day, from Folk to Opera!
Dogs welcome with their owners on a Lead.

Clonter Opera Theatre, Swettenham Heath, Congleton, Cheshire, CW 12 2LR
Registered Charity No. 1083903









Our Patron Sponsors

OUR PATRON SPONSORS

WE WOULD LIKE TO THANK THE ORGANISATIONS BELOW FOR THEIR FINANCIAL SUPPORT TO THE HOLMES CHAPEL PARTNERSHIP

	<p>HURSTWOOD HOLDINGS</p>	<p>www.hurstwoodholdings.com 40 Peter Street Manchester M2 5GP Tel 0161 220 1999</p>
	<p>MASSEY FEEDS</p>	<p>www.masseyfeeds.co.uk Massey Feeds, Holmes Chapel Mill Holmes Chapel Cheshire CW4 8EE Tel 01477 536300</p>
	<p>HOLMES CHAPEL PARISH COUNCIL</p>	<p>www.holmeschapelparishcouncil.gov.uk Holmes Chapel Parish Council 1 Church Walk Holmes Chapel Cheshire CW4 7AZ Tel 01477 533934</p>
	<p>BAYFIELDS OPTICIANS & AUDIOLOGISTS</p>	<p>www.bayfieldsopticians.com Bayfields Opticians & Audiologists 2 George Walk, High Street Sandbach Cheshire CW11 1AR Tel 01270 763641</p>
	<p>DUTTON BUILDERS MERCHANTS</p>	<p>www.duttonbuildersmerchants.co.uk Dutton Builders Merchants Dutton Business Park, Holmes Chapel Road Middlewich Cheshire CW10 0QZ Tel 01606 738491</p>
	<p>CALVIN MARKETING</p>	<p>www.calvinm.co.uk Calvin Marketing 2 Blackcroft Barn, Holmes Chapel Road Lower Withington Cheshire Sk11 9DP 01477 571888</p>

For further details on Patron Sponsorship please visit our sponsors page

Holmes Chapel Partnership – Working with the whole community