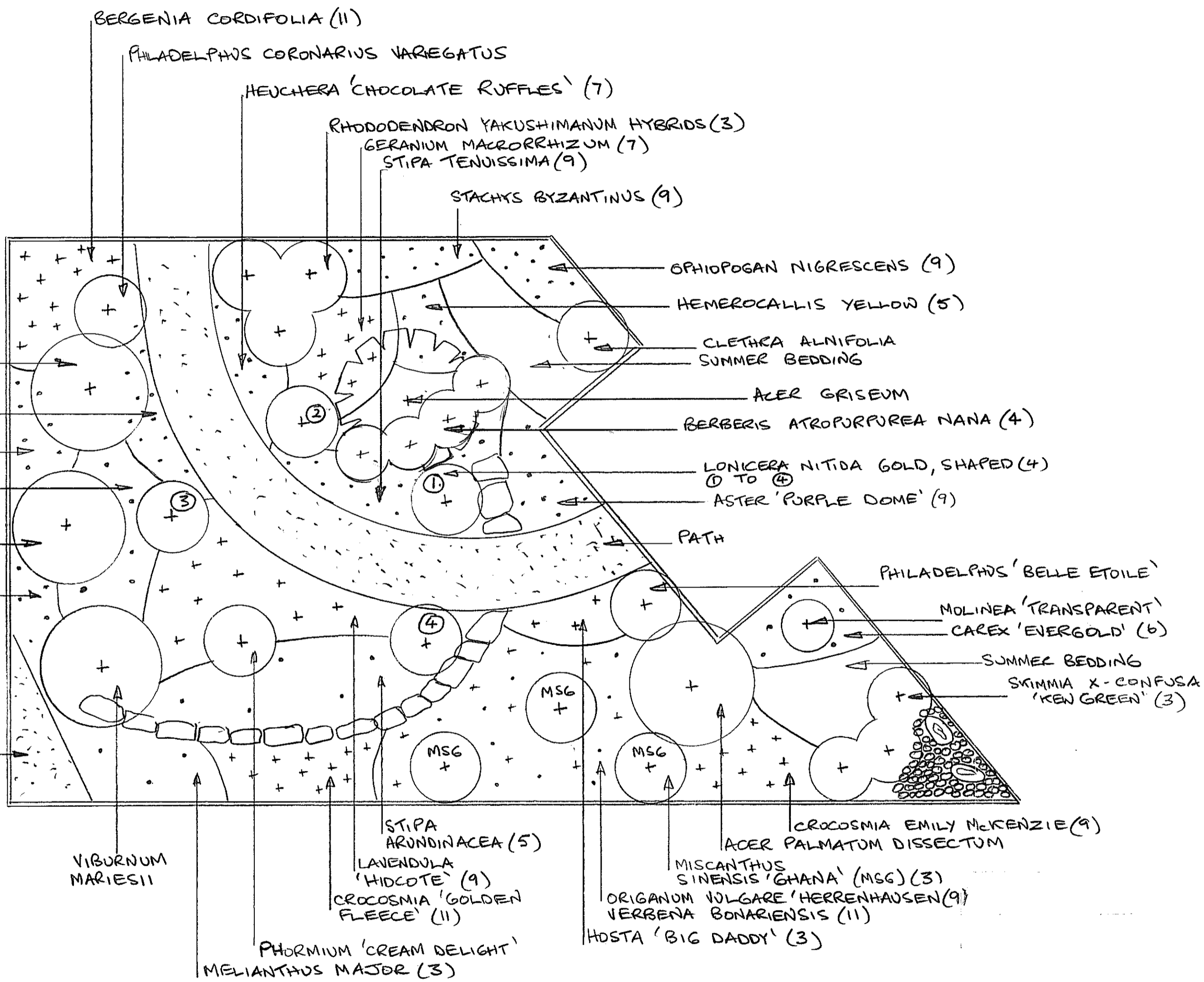


DRG. No. TN/

A  
B  
C  
D  
E  
F  
G  
H



Trees	
Acer griseum	1
<b>1</b>	
Shrubs	
Acer palmatum dissectum	1
Berberis atropurpurea nana	4
Choisya ternata "Aztec Pearl"	1
Clethra alnifolia	1
Hydrangea paniculata 'Grandiflora'	1
Lavendula "Hidcote"	9
Lonicera nitida "Baggesen's Gold"	4
Philadelphus "Belle Etoile"	1
Philadelphus coronarius variegatus	1
Rhododendron yakushimanum hybrids	3
Skimmia x-confusa 'Kew Green'	3
Viburnum plicatum "Mariesii"	1
<b>30</b>	
Herbaceous	
Aster Purple Dome	9
Astilbe chinensis "pumila"	11
Bergenia cordifolia	11
Carex oshimensis "Evergold"	6
Crocsmia Emily McKenzie	9
Crocsmia 'Golden Fleece'	11
Eupatorium purpureum 'Chocolate'	5
Geranium macrorrhizum	7
Hemeracallis Yellow	5
Heuchera 'Chocolate Ruffles'	7
Hosta Big Daddy	3
Meliantus Major	3
Miscanthus sinensis 'Ghana'	3
Molinea caerulea 'Transparent'	1
Ophiopogon planiscapus "Nigrescens"	9
Origanum vulgare 'Herrenhausen'	9
Phormium cookianum "Cream Delight"	1
Sedum spectabile 'Autmn Joy'	12
Stachys byzantina "Silver Carpet"	9
Stipa arundinacea	5
Stipa tenuissima	9
Verbena bonariensis	11
<b>156</b>	

ALL DIMENSIONS MUST BE CHECKED ON SITE AND NOT SCALED FROM THE DRAWING	
17.4.18	PLANTING AROUND NEW TREE
DATE	REVISION

CLIENT:  
Parish Council Holmes Chapel  
JOB NO: 546 DWG NO: 2

**GARDEN DESIGN**  
BY  
**JOHN CLOWES**  
CROCO BROOK FARM  
CHESTER ROAD  
HOLMES CHAPEL  
CHESHIRE CW4 7DR  
01477 532866

TITLE:  
Planting Plan for Precinct Entrance  
SCALE: 1:50 DATE: 23.8.17

ISSUE	NAME	DATE	NAME	DATE
DRAWN	A		B	
CHECKED				
APPROVED				

